

# Prelude d-moll

Livre de pieces pour la guitarrre dédié au roy

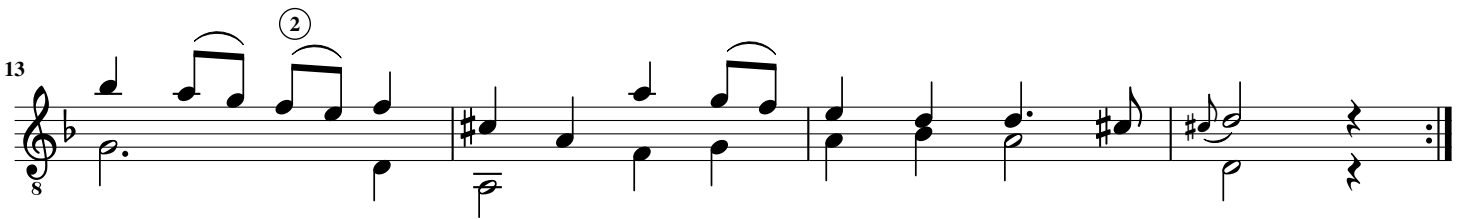
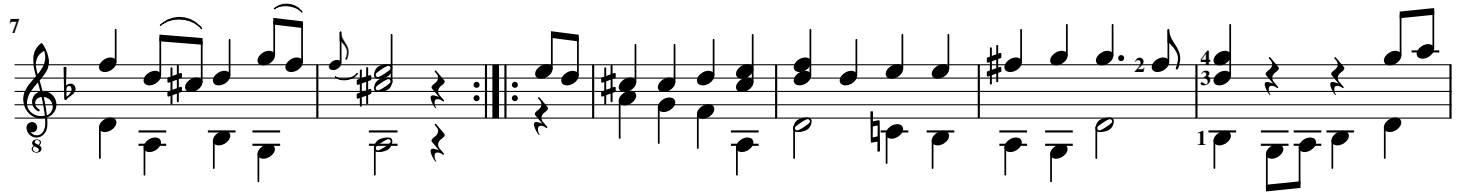
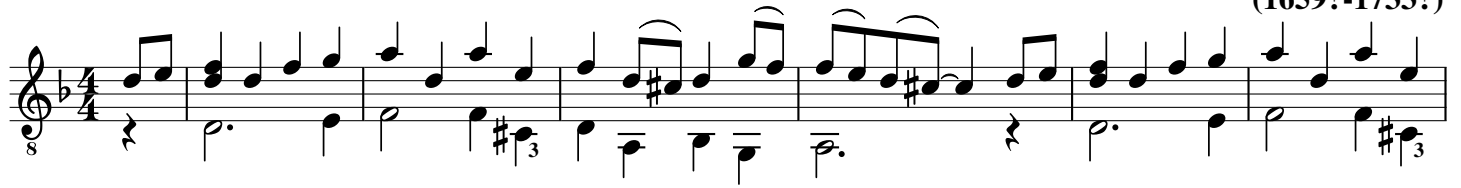
R. de Visée  
(1659?-1733?)

The image shows a musical score for a guitar prelude in D minor. The score is written in 4/4 time and consists of three systems of music. The first system (measures 1-4) features a treble clef and a bass clef. The melody in the treble clef starts with a quarter rest, followed by eighth notes, and includes a triplet of eighth notes in the third measure. The bass clef provides a steady accompaniment of quarter notes. The second system (measures 5-8) continues the melody and accompaniment, with a first ending bracket over measures 7 and 8. The third system (measures 9-10) concludes the piece with a final chord in the bass clef and a double bar line.

# Bourée d-moll

Livre de pieces pour la guittarre dédié au roy

R. de Visée  
(1659?-1733?)



# Gavotte d-moll

Livre de pieces pour la guitarrre dédié au roy

R. de Visée  
(1659?-1733?)

The first system of the Gavotte d-moll is written in 4/4 time and D minor. It begins with a treble clef and a key signature of one flat. The melody starts with a quarter note G4, followed by a quarter note A4, and then a quarter note Bb4. The bass line consists of a half note chord G2-Bb2. The melody continues with a quarter note C5, a quarter note Bb4, and a quarter note A4. The bass line changes to a half note chord F2-A2. The melody then has a quarter note G4, a quarter note A4, and a quarter note Bb4. The bass line changes to a half note chord G2-Bb2. The melody concludes with a quarter note C5, a quarter note Bb4, and a quarter note A4. The bass line changes to a half note chord F2-A2. The system ends with a double bar line and repeat signs.

The second system of the Gavotte d-moll continues from the first system. It begins with a treble clef and a key signature of one flat. The melody starts with a quarter note G4, followed by a quarter note A4, and then a quarter note Bb4. The bass line consists of a half note chord G2-Bb2. The melody continues with a quarter note C5, a quarter note Bb4, and a quarter note A4. The bass line changes to a half note chord F2-A2. The melody then has a quarter note G4, a quarter note A4, and a quarter note Bb4. The bass line changes to a half note chord G2-Bb2. The melody concludes with a quarter note C5, a quarter note Bb4, and a quarter note A4. The bass line changes to a half note chord F2-A2. The system ends with a double bar line and repeat signs.

The third system of the Gavotte d-moll continues from the second system. It begins with a treble clef and a key signature of one flat. The melody starts with a quarter note G4, followed by a quarter note A4, and then a quarter note Bb4. The bass line consists of a half note chord G2-Bb2. The melody continues with a quarter note C5, a quarter note Bb4, and a quarter note A4. The bass line changes to a half note chord F2-A2. The melody then has a quarter note G4, a quarter note A4, and a quarter note Bb4. The bass line changes to a half note chord G2-Bb2. The melody concludes with a quarter note C5, a quarter note Bb4, and a quarter note A4. The bass line changes to a half note chord F2-A2. The system ends with a double bar line and repeat signs.

The fourth system of the Gavotte d-moll continues from the third system. It begins with a treble clef and a key signature of one flat. The melody starts with a quarter note G4, followed by a quarter note A4, and then a quarter note Bb4. The bass line consists of a half note chord G2-Bb2. The melody continues with a quarter note C5, a quarter note Bb4, and a quarter note A4. The bass line changes to a half note chord F2-A2. The melody then has a quarter note G4, a quarter note A4, and a quarter note Bb4. The bass line changes to a half note chord G2-Bb2. The melody concludes with a quarter note C5, a quarter note Bb4, and a quarter note A4. The bass line changes to a half note chord F2-A2. The system ends with a double bar line and repeat signs.