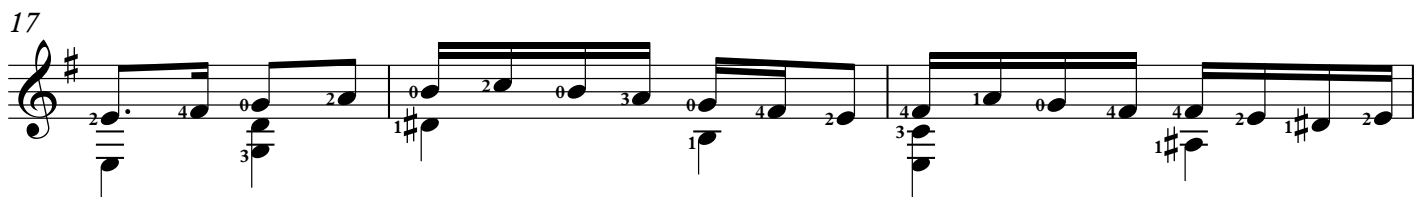
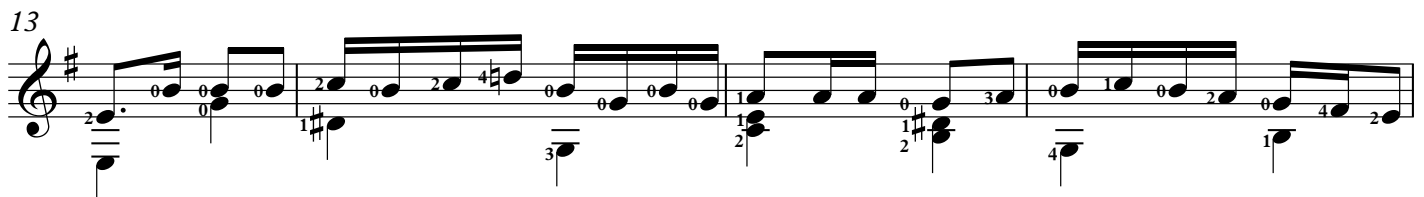
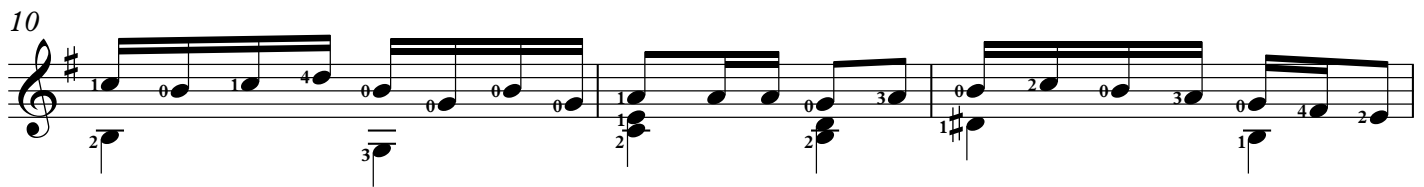
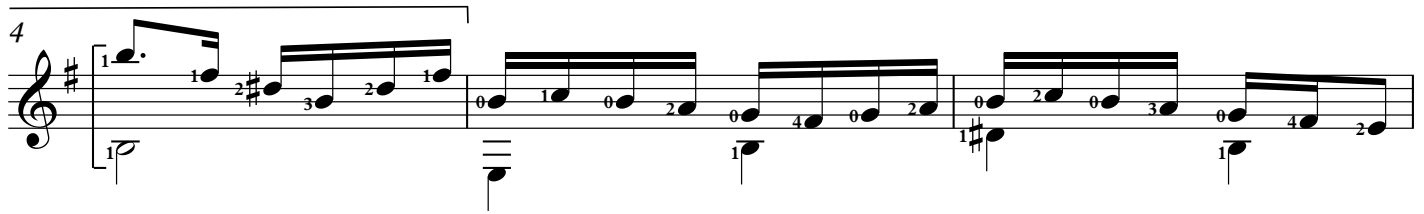
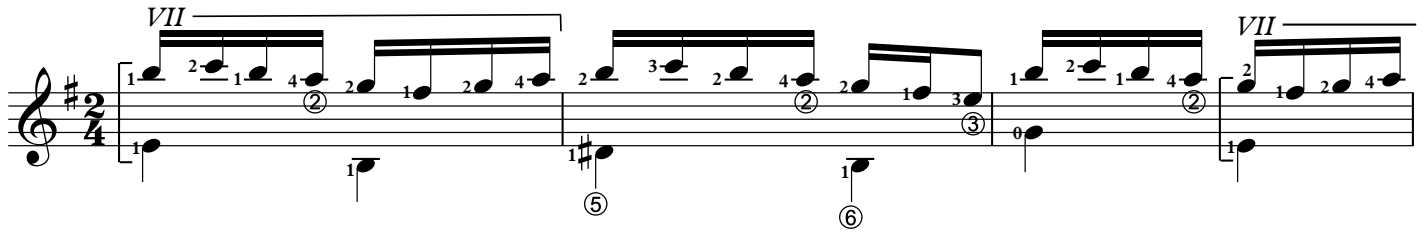


In your garden

Balkan song

♩ = 94 - 100

Arranged for guitar by Redi Marku (2017)



20

Exercise 20 consists of four measures. Measure 1: Treble clef, key signature of one sharp (F#), 4/4 time. Notes: G4 (quarter), A4 (quarter), B4 (quarter), C5 (quarter). Fingering: 4, 2, 1, #. Measure 2: Notes: D5 (quarter), E5 (quarter), F#5 (quarter), G5 (quarter). Fingering: 0, 4, 2, 1. Measure 3: Notes: G5 (quarter), F#5 (quarter), E5 (quarter), D5 (quarter). Fingering: 2, ., 4, 0. Measure 4: Notes: C5 (quarter), B4 (quarter), A4 (quarter), G4 (quarter). Fingering: 0, 2, 0, 2. A slur covers the first two notes of measure 4. Fingering 3 is written below the third note. A circled number 4 is above the first measure, with a line extending to the end of the exercise.

23

VII

0 1 4 3 1# 4 2 3 2# 1 2 4 1 2 1 4 2 1 2 4

29

0 1 0 2 0 4 0 2 1 2 0 3 0 4 2 4 1 0 4 4 3 3 1 2

[illegible]

35

4 2 3 4 2 3 1 2 3 4 2 1 3 1 2 1

④ ④ ⑤ ① ②

38

41

44

47

rall.